



**Model 350B21**

**Product Type:** Accelerometer, Shock Sensor

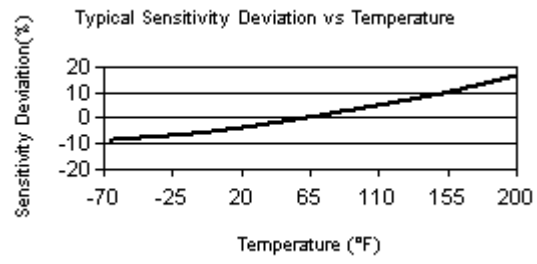
Shock, ceramic-shear, ICP® accel., 0.05 mV/g, 100k g range, case isolated, 10-ft integral cable

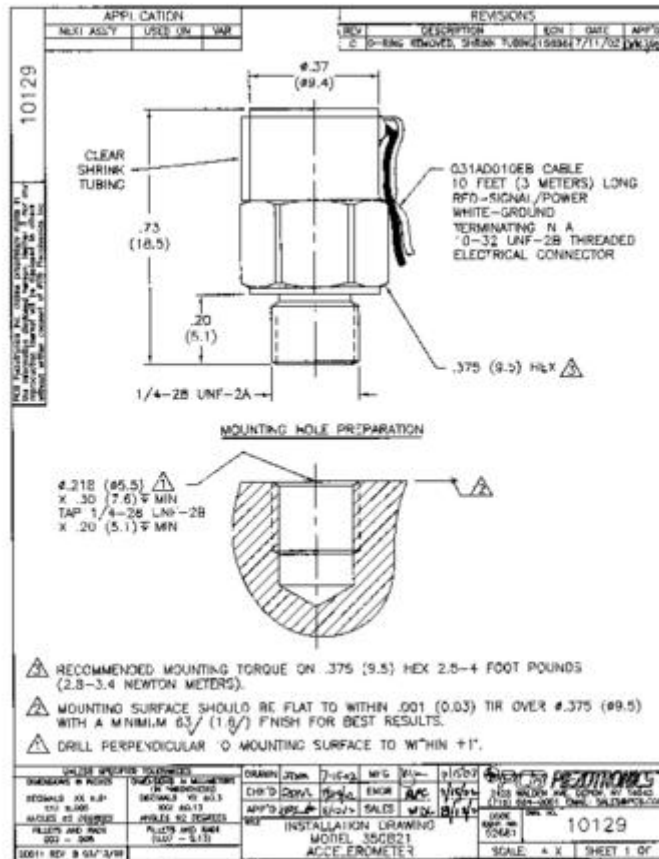
PERFORMANCE	ENGLISH	SI
Sensitivity(± 30 %)	0.05 mV/g	0.005 mV/(m/s <sup>2</sup> )
Measurement Range	± 100,000 g pk	± 980,000 m/s <sup>2</sup> pk
Frequency Range(± 1 dB)	1 to 10,000 Hz	1 to 10,000 Hz
Frequency Range(± 3 dB)	0.5 to 35,000 Hz	0.5 to 35,000 Hz
Resonant Frequency	≥ 200 kHz	≥ 200 kHz
Broadband Resolution(1 to 10,000 Hz)	0.3 g rms	2.9 m/s <sup>2</sup> rms [1]
Non-Linearity(per 10,000 g (98,100 m/s <sup>2</sup> ))	± 0.5 %	± 0.5 % [2]
Transverse Sensitivity	≤ 7 %	≤ 7 %
<b>ENVIRONMENTAL</b>		
Overload Limit(Shock)	± 200,000 g pk	± 1,960,000 m/s <sup>2</sup> pk
Temperature Range(Operating)	-65 to +200 °F	-54 to +93 °C
Temperature Response	See Graph	See Graph [1]
Base Strain Sensitivity	0.2 g/µε	2.0 (m/s <sup>2</sup> )/µε [1]
<b>ELECTRICAL</b>		
Excitation Voltage	18 to 30 VDC	18 to 30 VDC
Constant Current Excitation	2 to 20 mA	2 to 20 mA
Output Impedance	≤ 100 ohm	≤ 100 ohm
Output Bias Voltage	8 to 12 VDC	8 to 12 VDC
Discharge Time Constant	0.5 to 0.7 sec	0.5 to 0.7 sec [1]
Settling Time(within 10% of bias)		
Electrical Isolation(Case)	>10 <sup>8</sup> ohm	>10 <sup>8</sup> ohm
<b>PHYSICAL</b>		
Sensing Element	Ceramic	Ceramic
Sensing Geometry	Shear	Shear
Housing Material	Titanium	Titanium
Sealing	Hermetic	Hermetic
Size (Hex x Height)	0.375 in x 0.73 in	9.5 mm x 18.5 mm
Weight(without cable)	0.15 oz	4.4 gm [1]
Electrical Connector	Integral Cable	Integral Cable
Cable Length	10 ft	3.05 m
Cable Type	031 Twisted Pair	031 Twisted Pair
Mounting Thread	1/4-28 Male	1/4-28 Male
<b>SUPPLIED ACCESSORIES:</b>		
Model ACS-22 NIST Traceable frequency response (100Hz to ±1 dB point) (1)		
<b>OPTIONAL VERSIONS</b>		
<b>M-</b> Metric Mount		
Mounting Thread	M6 x 0.75 Male	M6 x 0.75 Male

*All specifications are at room temperature unless otherwise specified.*

**NOTES:**

- [1] Typical.
- [2] Value depicts maximum sensitivity change.





Download Drawing [10129-C.pdf](#)



**Model 350C02**

**Product Type:** Accelerometer, Shock Sensor

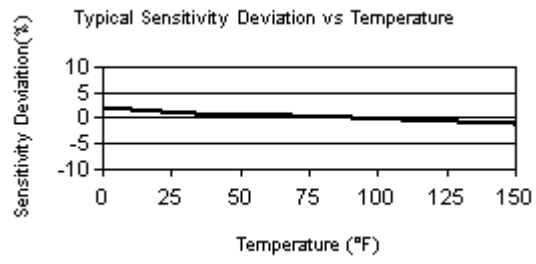
Shock, ICP® accel., 0.1 mV/g, 50 kg, 10-ft integral cable, 1/4-28 integral stud

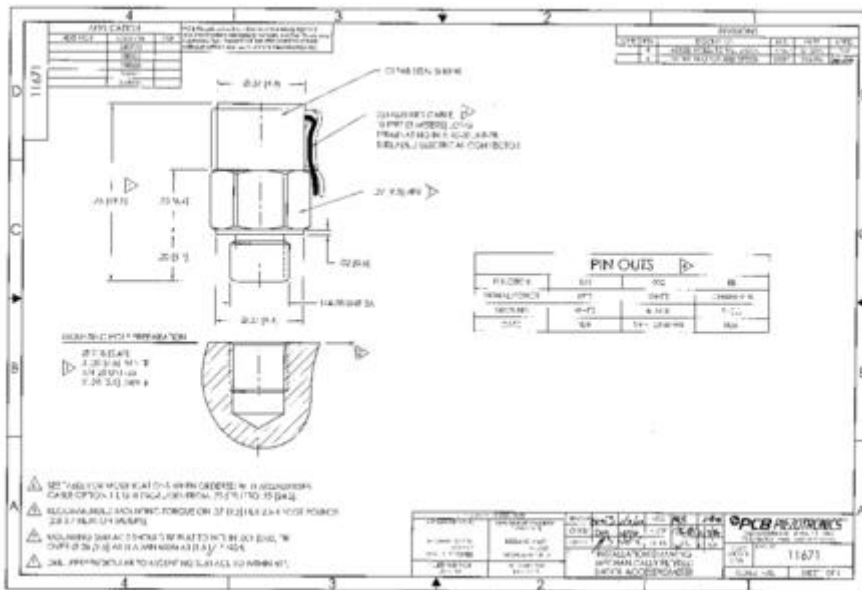
PERFORMANCE	ENGLISH	SI
Sensitivity(± 30 %)	0.1 mV/g	0.01 mV/(m/s <sup>2</sup> )
Measurement Range	± 50,000 g pk	± 490,000 m/s <sup>2</sup> pk
Frequency Range(± 1 dB)	4 to 10,000 Hz	4 to 10,000 Hz
Frequency Range(-3 dB)	2 to 25,000 Hz	2 to 25,000 Hz [2]
Electrical Filter Corner Frequency(-3 dB)	13 kHz	13 kHz [1][3]
Mechanical Filter Resonant Frequency	23 kHz	23 kHz [1][4]
Resonant Frequency	≥ 100 kHz	≥ 100 kHz
Broadband Resolution(1 to 10,000 Hz)	0.5 g rms	4.9 m/s <sup>2</sup> rms [1]
Non-Linearity(per 10,000 g (98,100 m/s <sup>2</sup> ))	≤ 2.5 %	≤ 2.5 %
Transverse Sensitivity	≤ 7 %	≤ 7 %
<b>ENVIRONMENTAL</b>		
Overload Limit(Shock)	± 150,000 g pk	± 1,471,500 m/s <sup>2</sup> pk
Temperature Range(Operating)	0 to +150 °F	-18 to +66 °C
Temperature Range(Storage)	-40 to +200 °F	-40 to +93 °C
Temperature Response	See Graph	See Graph [1]
<b>ELECTRICAL</b>		
Excitation Voltage	20 to 30 VDC	20 to 30 VDC
Constant Current Excitation	2 to 20 mA	2 to 20 mA
Output Impedance	≤ 200 ohm	≤ 200 ohm
Output Bias Voltage	8 to 14 VDC	8 to 14 VDC
Discharge Time Constant	0.10 sec	0.10 sec [1]
Settling Time(within 10% of bias)		
Electrical Isolation(Case)	>1,000,000 ohm	>1,000,000 ohm
<b>PHYSICAL</b>		
Sensing Element	Ceramic	Ceramic
Sensing Geometry	Shear	Shear
Housing Material	Titanium	Titanium
Sealing	Hermetic	Hermetic
Size (Hex x Height)	0.375 in x 0.75 in	9.5 mm x 19.1 mm
Weight(without cable)	0.15 oz	4.2 gm [1]
Electrical Connector	Integral Cable	Integral Cable
Cable Length	10 ft	3.05 m
Cable Type	031 Twisted Pair	031 Twisted Pair
Mounting Thread	1/4-28 Male	1/4-28 Male
<b>SUPPLIED ACCESSORIES:</b>		
Model ACS-22 NIST Traceable frequency response (100Hz to ±1 dB point) (1)		
<b>OPTIONAL VERSIONS</b>		
<b>M-</b> Metric Mount		
Mounting Thread	M6 x 0.75 Male	M6 x 0.75 Male

*All specifications are at room temperature unless otherwise specified.*

**NOTES:**

- [1] Typical.
- [2] Typical corner frequency for coupled electrical and mechanical filters.
- [3] Electrical filter is a second order filter.
- [4] Amplitude at resonance is +9 dB.





Download Drawing [11671-F.pdf](#)



### Model 350B03

**Product Type:** Accelerometer, Shock Sensor

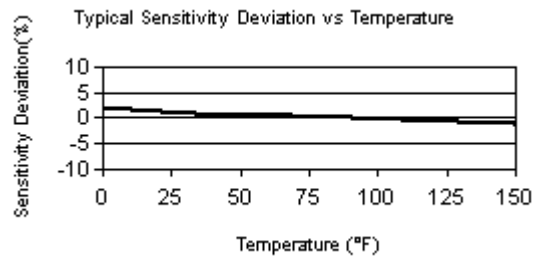
Shock, ceramic-shear, ICP® accel., 0.5 mV/g, 10k g range, LP filter, 10-32 top conn.

PERFORMANCE	ENGLISH	SI
Sensitivity(± 30 %)	0.5 mV/g	0.05 mV/(m/s <sup>2</sup> )
Measurement Range	± 10,000 g pk	± 98,000 m/s <sup>2</sup> pk
Frequency Range(± 1 dB)	0.4 to 10,000 Hz	0.4 to 10,000 Hz
Frequency Range(-3 dB)	0.2 to 25,000 Hz	0.2 to 25,000 Hz [2]
Electrical Filter Corner Frequency(-3 dB)	13 kHz	13 kHz [1][3]
Mechanical Filter Resonant Frequency	23 kHz	23 kHz [1][4]
Resonant Frequency	≥ 100 kHz	≥ 100 kHz
Broadband Resolution(1 to 10,000 Hz)	0.04 g rms	0.39 m/s <sup>2</sup> rms [1]
Non-Linearity	≤ 2.0 %	≤ 2.0 %
Transverse Sensitivity	≤ 7 %	≤ 7 %
<b>ENVIRONMENTAL</b>		
Overload Limit(Shock)	± 50,000 g pk	± 490,000 m/s <sup>2</sup> pk
Temperature Range(Operating)	0 to +150 °F	-18 to +66 °C
Temperature Range(Storage)	-40 to +200 °F	-40 to +93 °C
Temperature Response	See Graph	See Graph
Base Strain Sensitivity	0.002 g/με	0.02 (m/s <sup>2</sup> )/με [1]
<b>ELECTRICAL</b>		
Excitation Voltage	20 to 30 VDC	20 to 30 VDC
Constant Current Excitation	2 to 20 mA	2 to 20 mA
Output Impedance	≤ 200 ohm	≤ 200 ohm
Output Bias Voltage	8 to 14 VDC	8 to 14 VDC
Discharge Time Constant	1.0 to 2.0 sec	1.0 to 2.0 sec
Settling Time(within 10% of bias)		
<b>PHYSICAL</b>		
Sensing Element	Ceramic	Ceramic
Sensing Geometry	Shear	Shear
Housing Material	Titanium	Titanium
Sealing	Hermetic	Hermetic
Size (Hex x Height)	0.375 in x 1.02 in	9.5 mm x 25.9 mm
Weight	0.16 oz	4.5 gm [1]
Electrical Connector	10-32 Coaxial Jack	10-32 Coaxial Jack
Electrical Connection Position	Top	Top
Mounting Thread	1/4-28 Male	1/4-28 Male
<b>SUPPLIED ACCESSORIES:</b>		
Model ACS-22 NIST Traceable frequency response (100Hz to ±1 dB point) (1)		
<b>OPTIONAL VERSIONS</b>		
<b>M-</b> Metric Mount		
Mounting Thread	M6 x 0.75 Male	M6 x 0.75 Male
<b>W-</b> Water Resistant Cable		
Electrical Connector	Sealed Attached Cable	

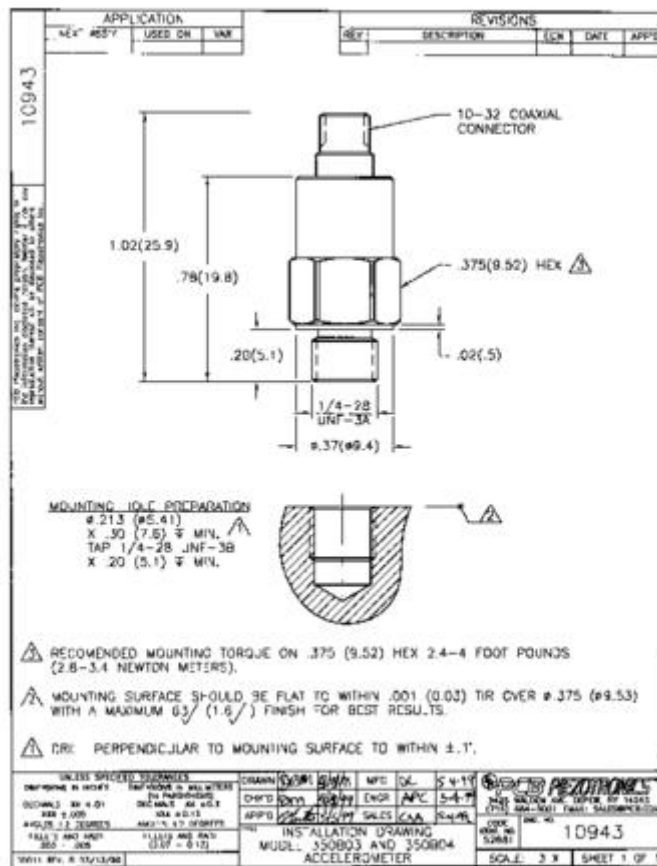
*All specifications are at room temperature unless otherwise specified.*

**NOTES:**

- [1] Typical.
- [2] Typical corner frequency for coupled electrical and mechanical filters.
- [3] Electrical filter is a second order filter.
- [4] Amplitude at resonance is +9 dB.







Download Drawing [10943-NR.pdf](#)